

# Introduction to Art History Study Guide

Gregory Beauregard

October 1, 2012

# Contents

Preface . . . . .	2
<b>1 Egyptian</b>	<b>3</b>
1.1 narmer (narmer) . . . . .	3
1.2 gizapyramid (gizapyramid) . . . . .	4
1.3 sphinx (sphinx) . . . . .	5
1.4 khafre (khafre) . . . . .	6
1.5 tombofti (tombofti) . . . . .	7
1.6 tutankhamen (tutankhamen) . . . . .	8
<b>2 Archaic Greek</b>	<b>8</b>
2.1 kouros (kouros) . . . . .	9
2.2 kore (kore) . . . . .	10
<b>3 Classical Greek</b>	<b>10</b>
3.1 spearbearer (spearbearer) . . . . .	11
3.2 zeusor (zeusor) . . . . .	12
3.3 warrior (warrior) . . . . .	13
3.4 parthenon (parthenon) . . . . .	14
3.5 athenaparthenos (athenaparthenos) . . . . .	14
3.6 dionysos (dionysos) . . . . .	14
3.7 threegod (threegod) . . . . .	14
3.8 lapith (lapith) . . . . .	14
3.9 panathenaic (panathenaic) . . . . .	14
<b>4 Hellenistic Greek</b>	<b>14</b>
4.1 samothrace (samothrace) . . . . .	15
4.2 melos (melos) . . . . .	15
4.3 oldwoman (oldwoman) . . . . .	15
4.4 laocoon (laocoon) . . . . .	15
<b>5 Roman</b>	<b>15</b>
5.1 pompeii (pompeii) . . . . .	15
5.2 pontdugard (pontdugard) . . . . .	15
5.3 colosseum (colosseum) . . . . .	15
5.4 ulpia (ulpia) . . . . .	15
5.5 pantheon (pantheon) . . . . .	15
<b>6 Early Christian</b>	<b>15</b>
<b>7 Early Middle Ages</b>	<b>15</b>

## Preface

This *Introduction to Art History Study Guide* came about as I found I was spending increasingly less time studying and reading **gardner** I needed a solution: fast. As it turns out, it was right in front of me. I love typography and the nuances of document design, so why not combine it with Art History to make a project? As such, this study guide has come to pass. It is a result of many hours of meticulous document design and note taking that has come together to create a last-minute crammer's dream. I have gone to great lengths to attempt to follow the 16<sup>th</sup> edition of *The Chicago Manual of Style* when writing this study guide: all grammar, typography, and citation standards are derived from it. Although I am not perfect, I do my best to make sure all the information presented in this study guide is both accurate and correctly typeset. This guide is a constant work-in-progress, and the latest version can always be found at <https://gabmedia.org/ArtStudyGuide.pdf>. I hope you enjoy this guide as much as I have enjoyed writing it.

*Gregory Beauregard*

Gregory Beauregard



Introduction to Art History Study Guide by Gregory Beauregard is licensed under the Creative Commons Attribution-NonCommercial-ShareAlike 3.0 Unported License. To view a copy of this license, visit <http://creativecommons.org/licenses/by-nc-sa/3.0/>.

# 1 Egyptian

Overview of Egyptian art will go here.

## 1.1 narmer (narmer )



Photo 1: The **narmer** ([wiki:narmer](#) ).

The **narmer** is an ancient Egyptian palette found in Hierakonpolis, Egypt that is notable for recording the unification of Upper and Lower Egypt at the end of the Predynastic period, an event believed to have taken place over several centuries (**gardner** ). Additionally, it is one of the few known Egyptian artifacts made for the living (**introlecture** ). “At the top of each side of the palette are two heads of the goddess Hathor [...] here tak[ing] the form of a cow with a woman’s face” (**gardner** ). On the back of the palette King Narmer can be seen wearing the bowl-shaped crown of Upper Egypt as he slays an enemy. Above and to the right, the Egyptian god Horus can be seen represented as a falcon. Below Horus is a growing papyrus plant, a symbol for Lower Egypt. On the front of the palette King Narmer can be seen wearing the red crown of Lower Egypt while overlooking his beheaded enemies. At the bottom of the same side, a bull representing King Narmer’s superiority and strength is toppling the walls of a rebellious city (**gardner** ). All of the figures on the tablet are highly stylized renderings of the item being depicted. With the exception of the animals, figures tend to have a rigid appearance to them, representing an idealistic form for the Egyptians (**introlecture** ).



## 1.2 gizapyramid (gizapyramid )



Photo 2: The **gizapyramid** ([wiki:gizapyramid](#)).

### 1.3 sphinx (sphinx )



Photo 3: The **sphinx** ([wiki:sphinx](#)).

#### 1.4 khafre (khafre )



Photo 4: The khafre ([wiki:khafre](https://en.wikipedia.org/wiki/Khafre)).



## 1.5 tombofti (tombofti )

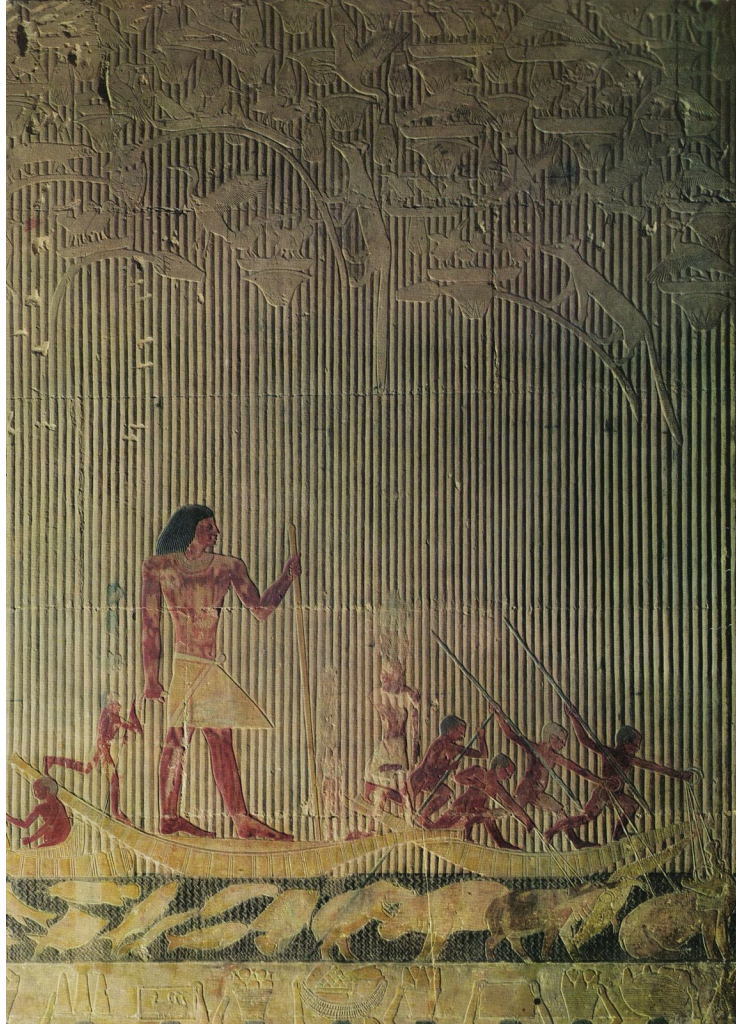


Photo 5: The **tombofti** ([wiki:tombofti](https://en.wikipedia.org/wiki/Tomb_of_Nebamun)).

## 1.6 tutankhamen (tutankhamen)



Photo 6: The **tutankhamen** ([wiki:tutankhamen](#)).

## 2 Archaic Greek

Overview of Archaic Greek art will go here.

## 2.1 kouros (kouros )



Photo 7: The **kouros** ([wiki:kouros](#) ).



## 2.2 kore (kore )



Photo 8: The **kore** ([wiki:kore](#)).

## 3 Classical Greek

Overview of Classical Greek art will go here.

### 3.1 spearbearer (spearbearer)



Photo 9: The **spearbearer** ([wiki:spearbearer](https://en.wikipedia.org/wiki/Spearbearer)).



### 3.2 zeusor (zeusor )

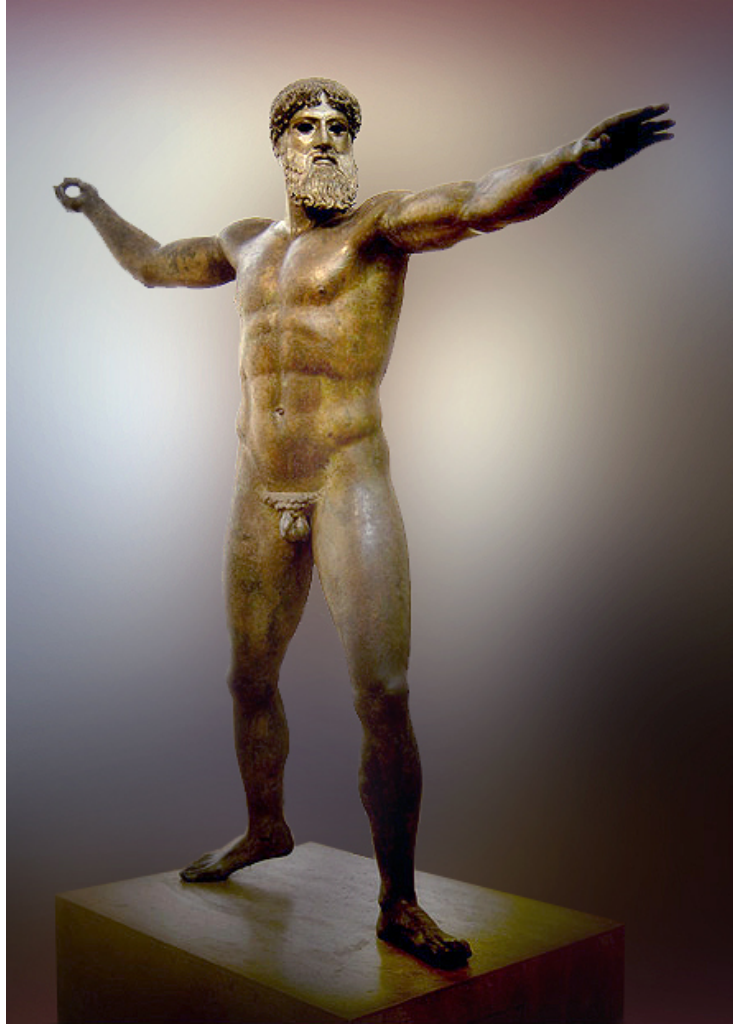


Photo 10: The zeusor ([wiki:zeusor](#) ).

### 3.3 warrior (warrior)

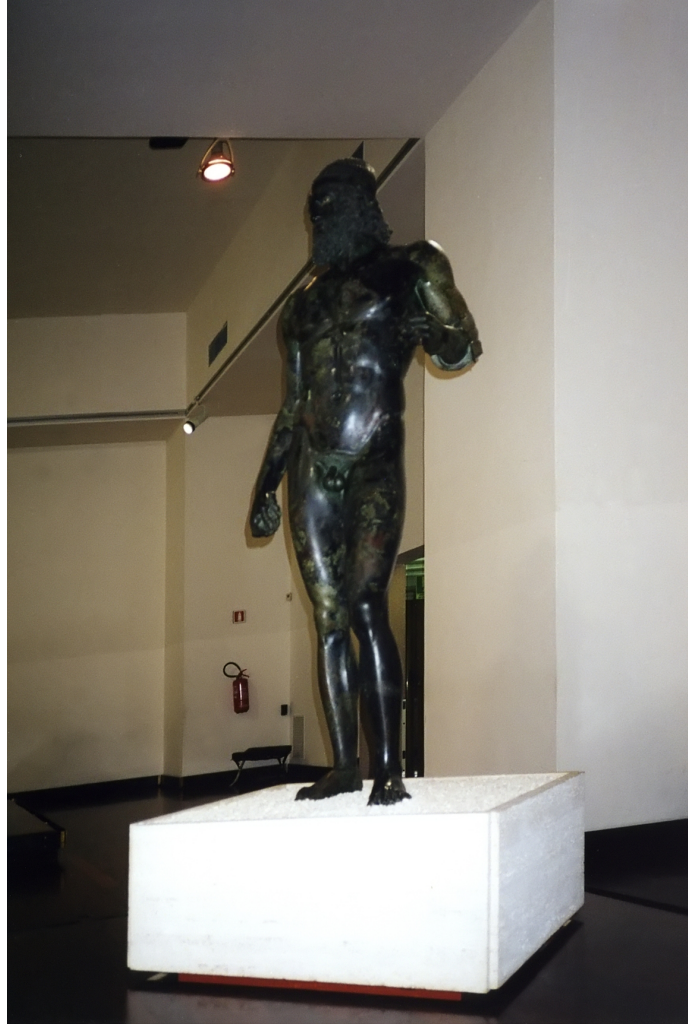


Photo 11: The warrior (wiki:warrior).

### 3.4 parthenon (parthenon )



Photo 12: The parthenon (wiki:parthenon ).

### 3.5 athenaparthenos (athenaparthenos )

### 3.6 dionysos (dionysos )

### 3.7 threegod (threegod )

### 3.8 lapith (lapith )

### 3.9 panathenaic (panathenaic )

## 4 Hellenistic Greek

Overview of Hellenistic Greek art will go here.

**4.1 samothrace (samothrace )**

**4.2 melos (melos )**

**4.3 oldwoman (oldwoman )**

**4.4 laocoon (laocoon )**

## **5 Roman**

Overview of Roman art will go here.

**5.1 pompeii (pompeii )**

**5.2 pontdugard (pontdugard )**

**5.3 colosseum (colosseum )**

**5.4 ulpia (ulpia )**

**5.5 pantheon (pantheon )**

## **6 Early Christian**

## **7 Early Middle Ages**